

ADJUSTABLE ACCESS COVER

850 series

SPECIFICATION

Sioux Chief 850 Series adjustable access cover shall be used where necessary to allow access drainage systems. Access cover shall fasten to specified DWV pipe or fitting by means of three set screws which shall be included around lower circumference of the body. Set screws shall allow for 1½" vertical adjustment. Cover shall meet all applicable load requirements for intended use.

MATERIALS

ring/cover: nickel-bronze, tenzallo, or cast iron
 set screws: square head, ¼-20
 cover screw: stainless steel, Phillips head, ¼-20

COVER LOAD RATING

nickel-bronze: 2,500 lbs. (medium duty)
 tenzallo: 1,250 lbs. (light duty)
 cast iron: 7,500 lbs. (heavy duty)

DIMENSIONS

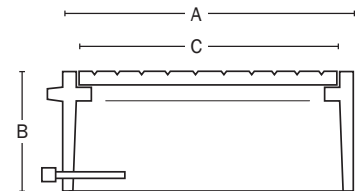
	nickel/ tenz	cast iron*
A: ring/cover diameter		
small model	6½"	6"
medium model	7¼"	7½"
large model	9¼"	8½"
B: height		
small model	2¾"	3"
medium model	2¾"	3"
large model	2¾"	3"
C: service diameter		
small model	2¾" – 5¾"	2½" – 5½"
medium model	3⅝" – 6⅝"	3⅝" – 6⅝"
large model	5⅝" – 8⅝"	5" – 8"

* Laminated models add ¼" to height and top diameter

Item # Submitted _____
Job Name _____
Location _____
Engineer _____
Contractor _____
PO# _____ TAG _____



850-2i



Create Item Number

850-ABC

e.g. 850-3TV = Tenzallo access cover for 3⅝" – 6⅝" pipe or fitting with vandal-resistant cover screws

A CONNECTION SIZE ¹

- 2 small connection
- 3 medium connection
- 4 large connection

¹ See dimension C for size ranges

B RING & COVER

- N nickel-bronze
- T tenzallo
- i cast iron
- iN nickel-bronze laminated cast iron

D OPTIONS (FACTORY INSTALLED)

- V vandal-resistant cover screws
- S stamped cover, specify letters ¹

¹ NOT available with cast iron ring & cover